

Test square: 10cm x 10cm / 4 inches x 4 inches

# DOPAMINE DRESSMAKING

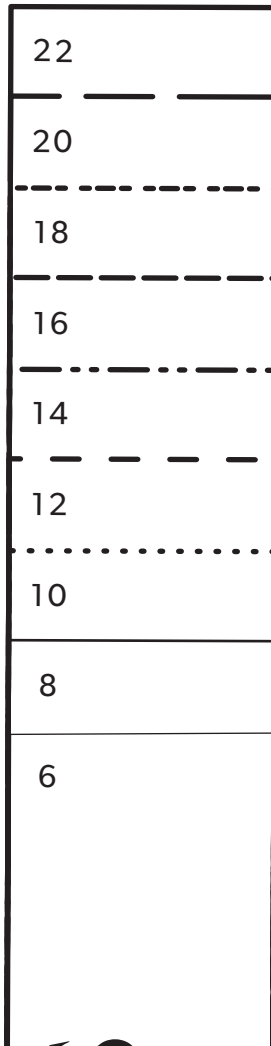
—

## THE TEA DRESS

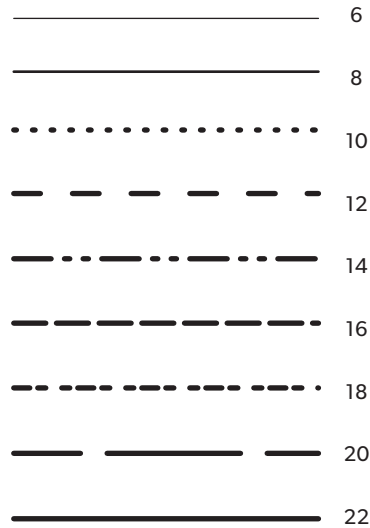
PROJECT DESIGN © BROGAN ALLARD 2024  
THIS DESIGN IS PROTECTED BY COPYRIGHT  
AND MUST NOT BE MADE FOR RESALE

1cm (3/8in) seam allowance included (unless otherwise stated)

CUT HERE FOR DRESS

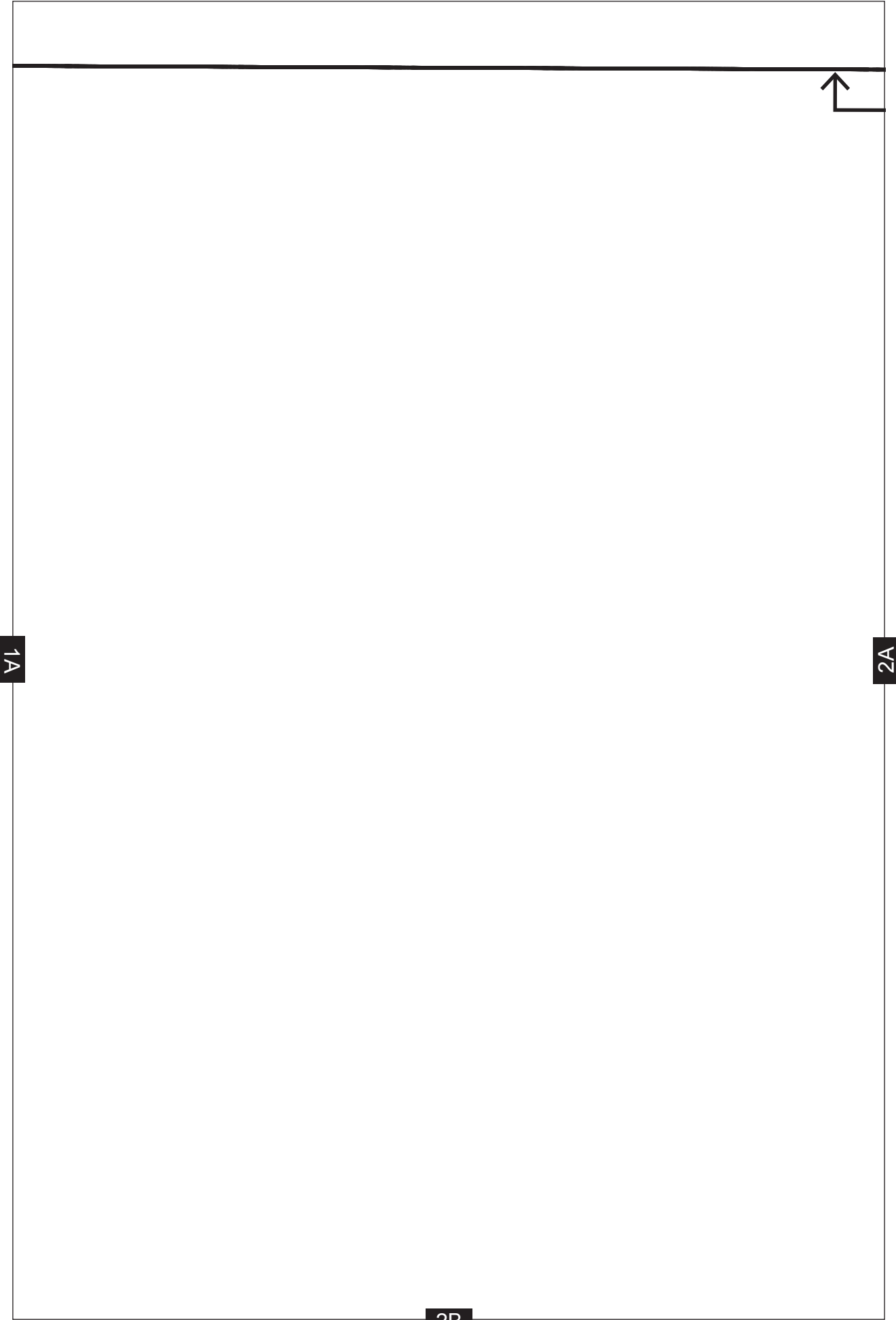


### Sizing Key



1A

1B



1A

2A

2B

PLACE ON FOL

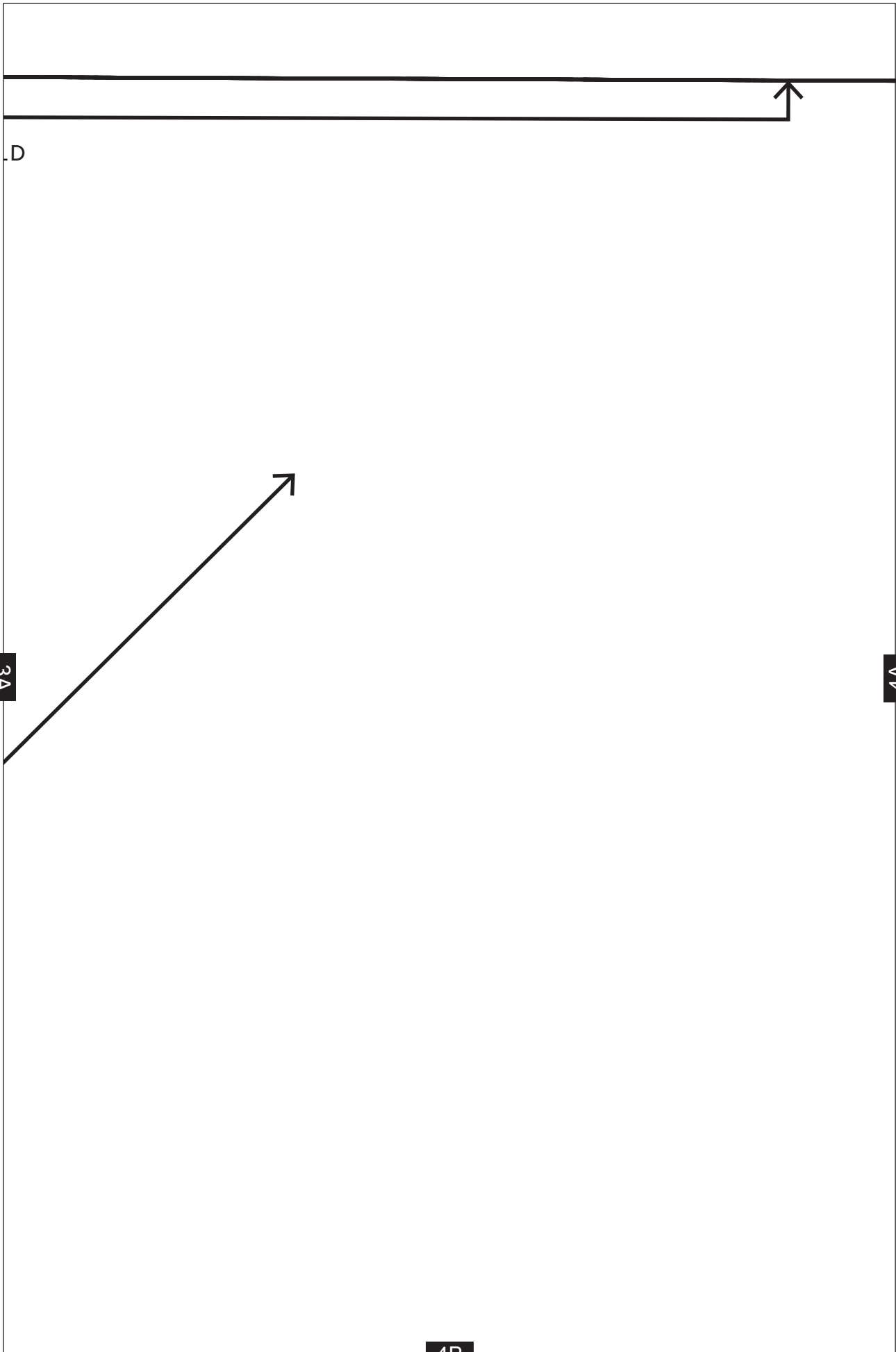
2A

3A

GRAINLINE



3B

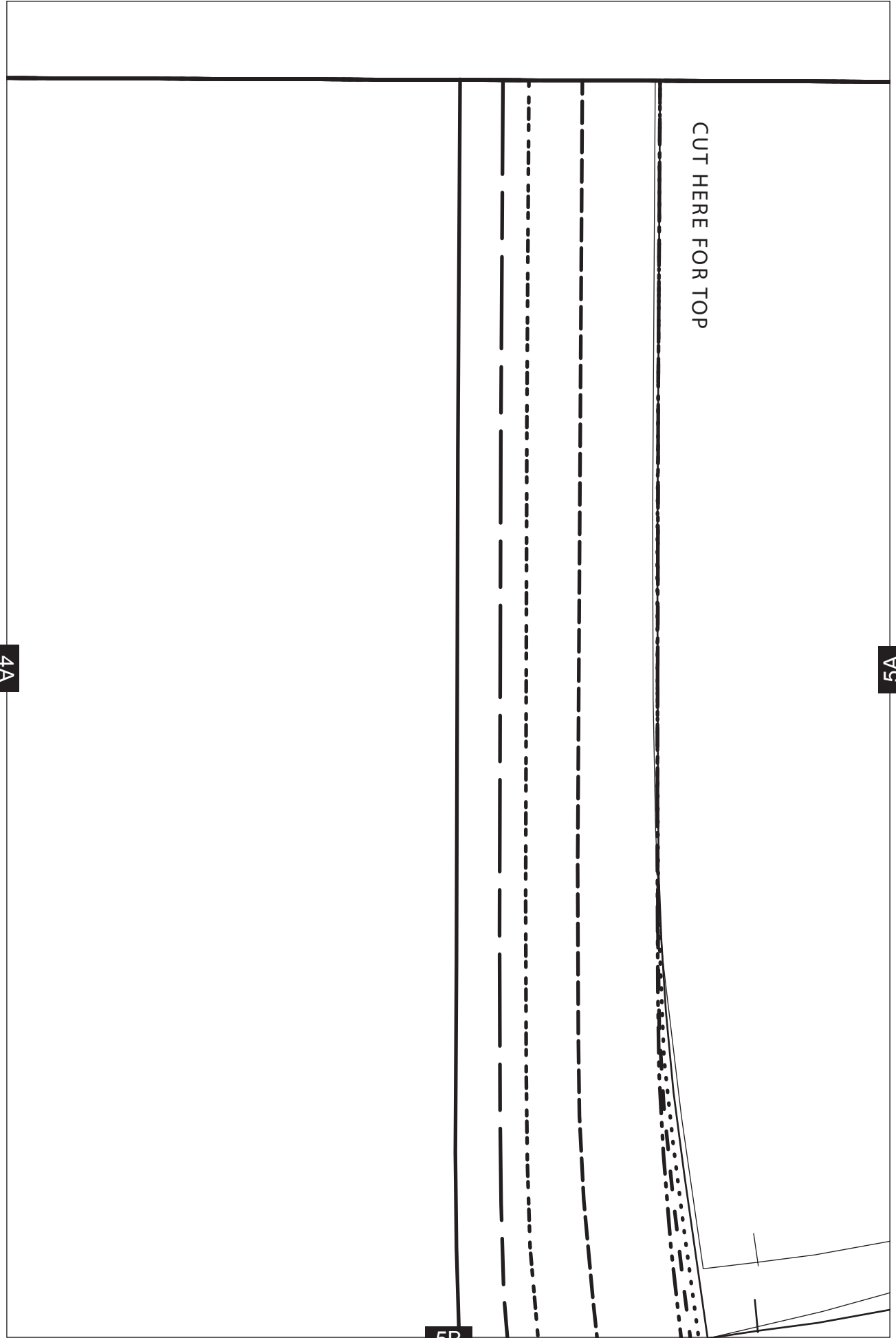


3A

4A

4B

D



4A

5A

5B

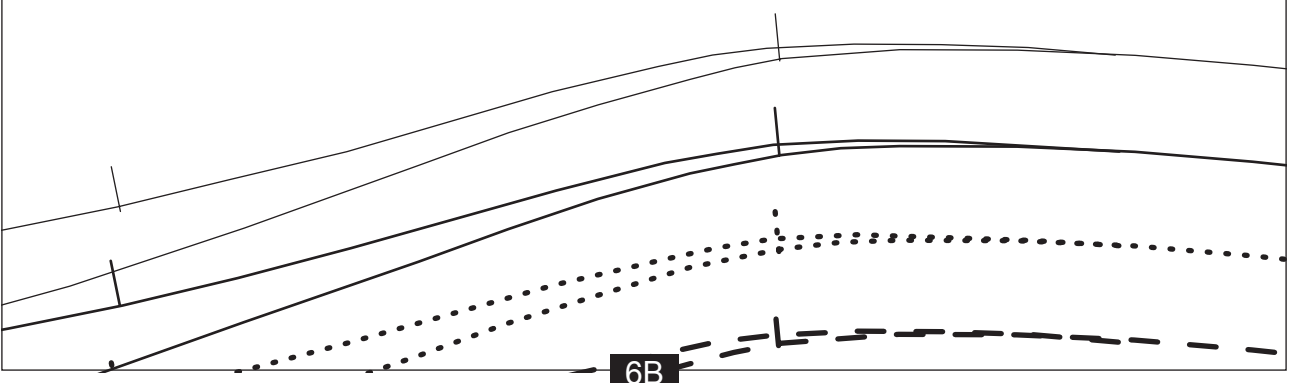
CUT HERE FOR TOP

# THE TEA DRESS

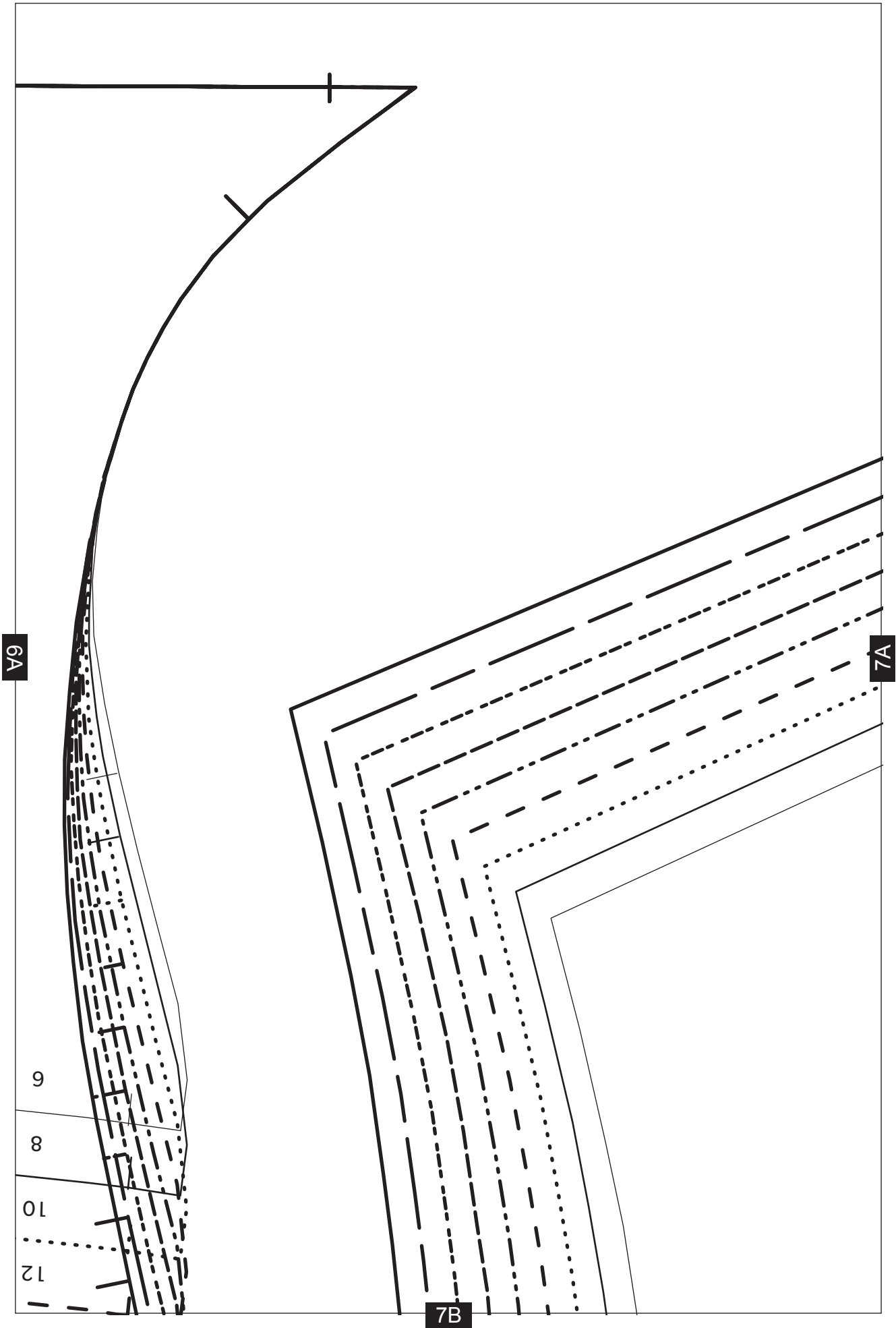
Skirt front  
Cut 1 on fold

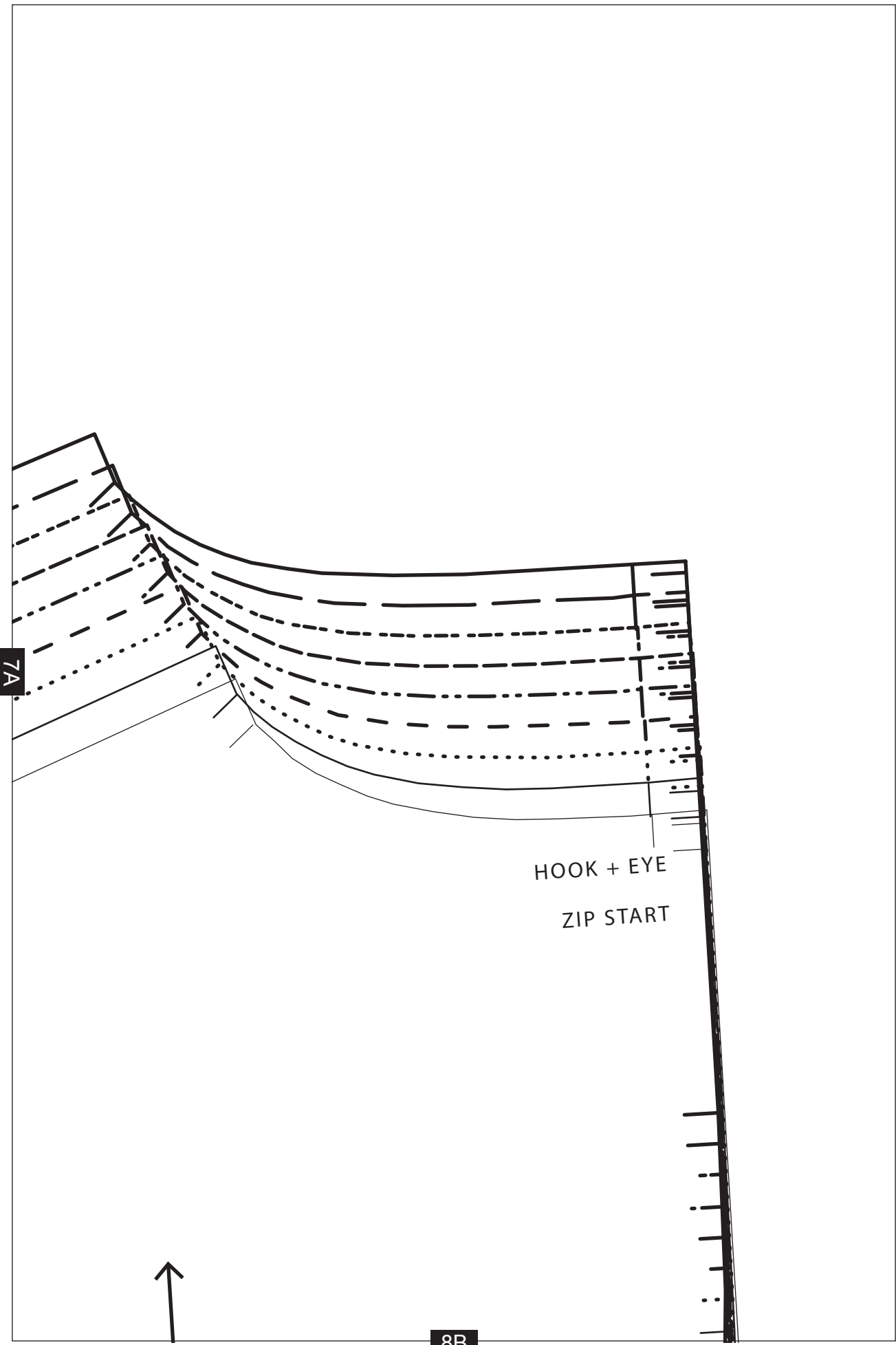
6A

5A



6B

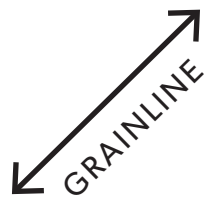






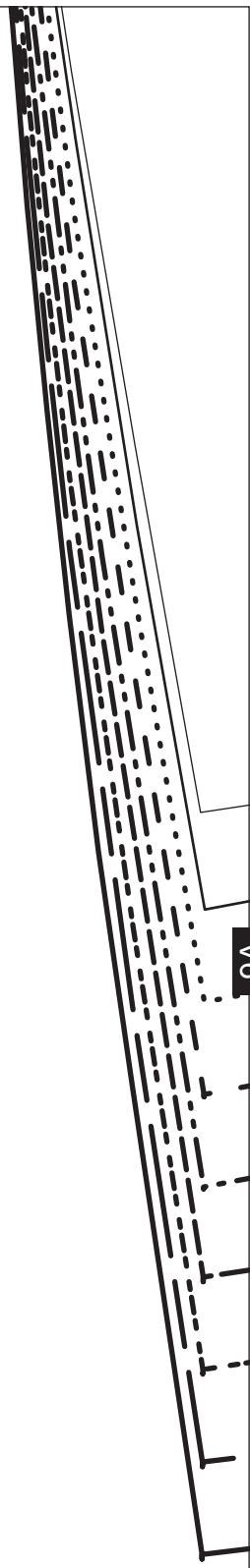
# THE TEA DRESS

Neckline binding Cut 1



1B

9B



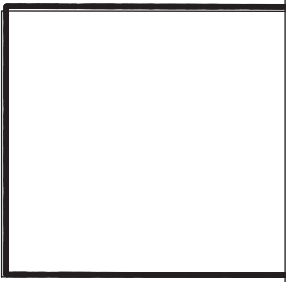
9A

2B

9A

10A

10B

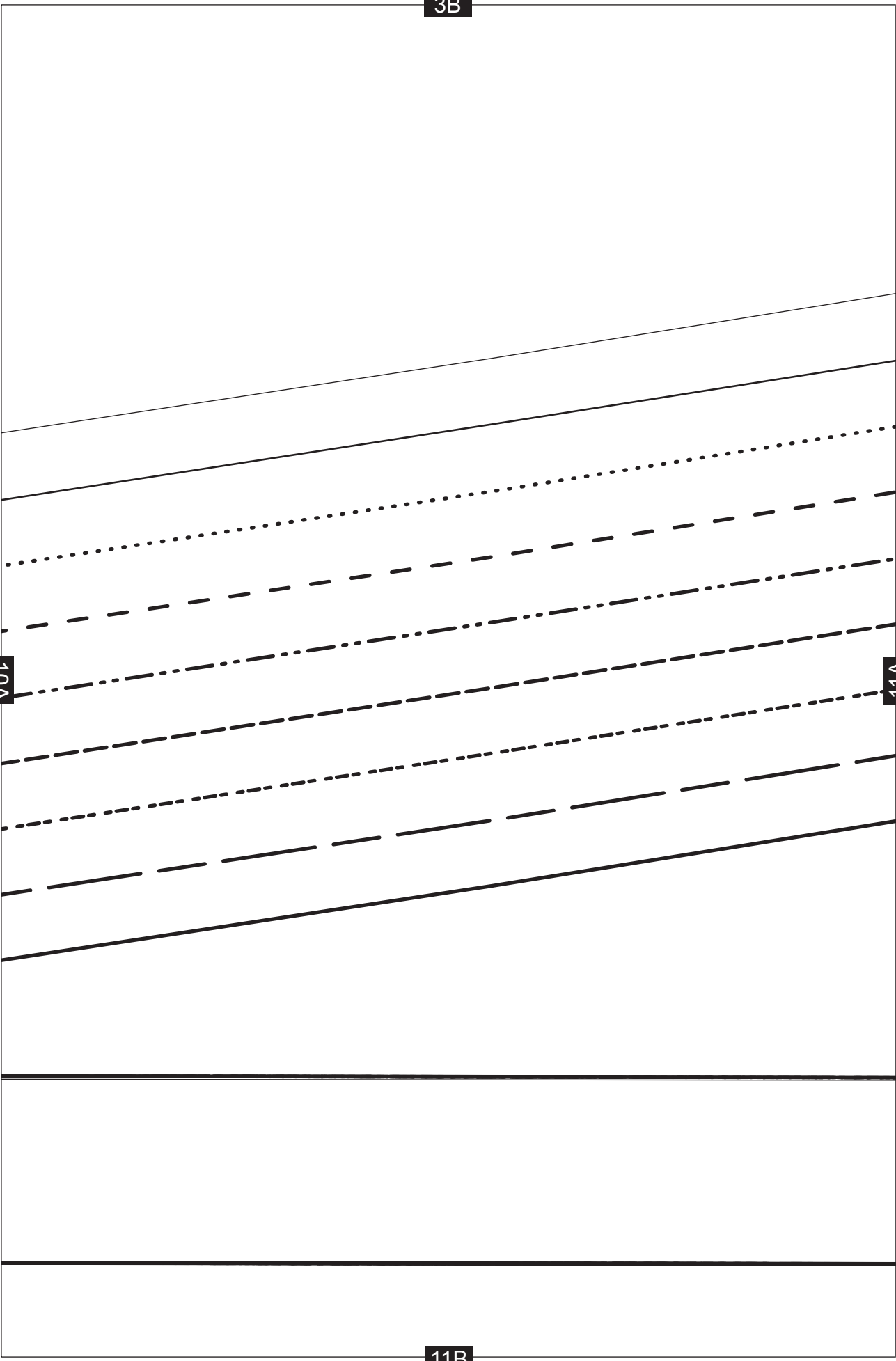


3B

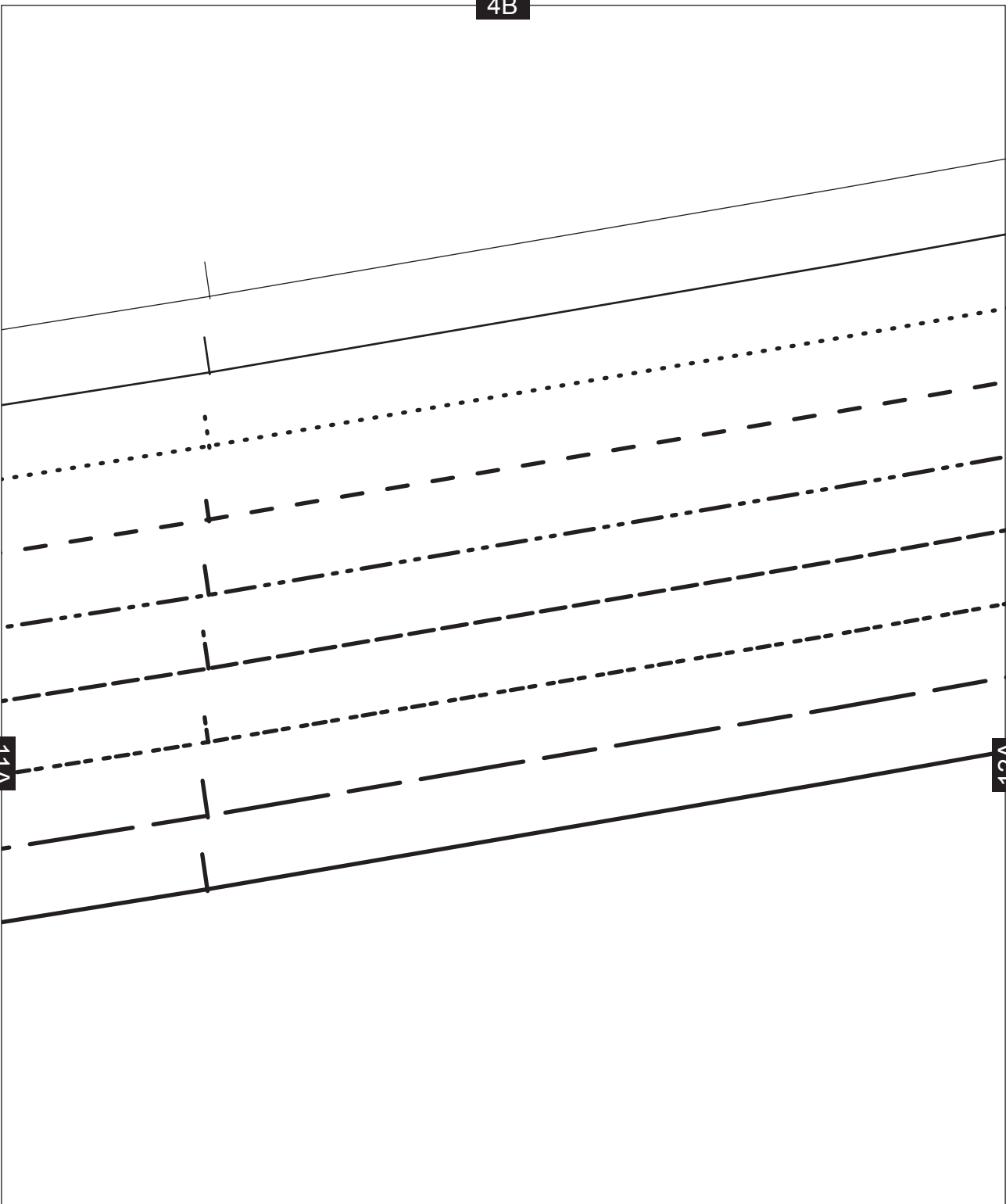
10A

11A

11B



4B

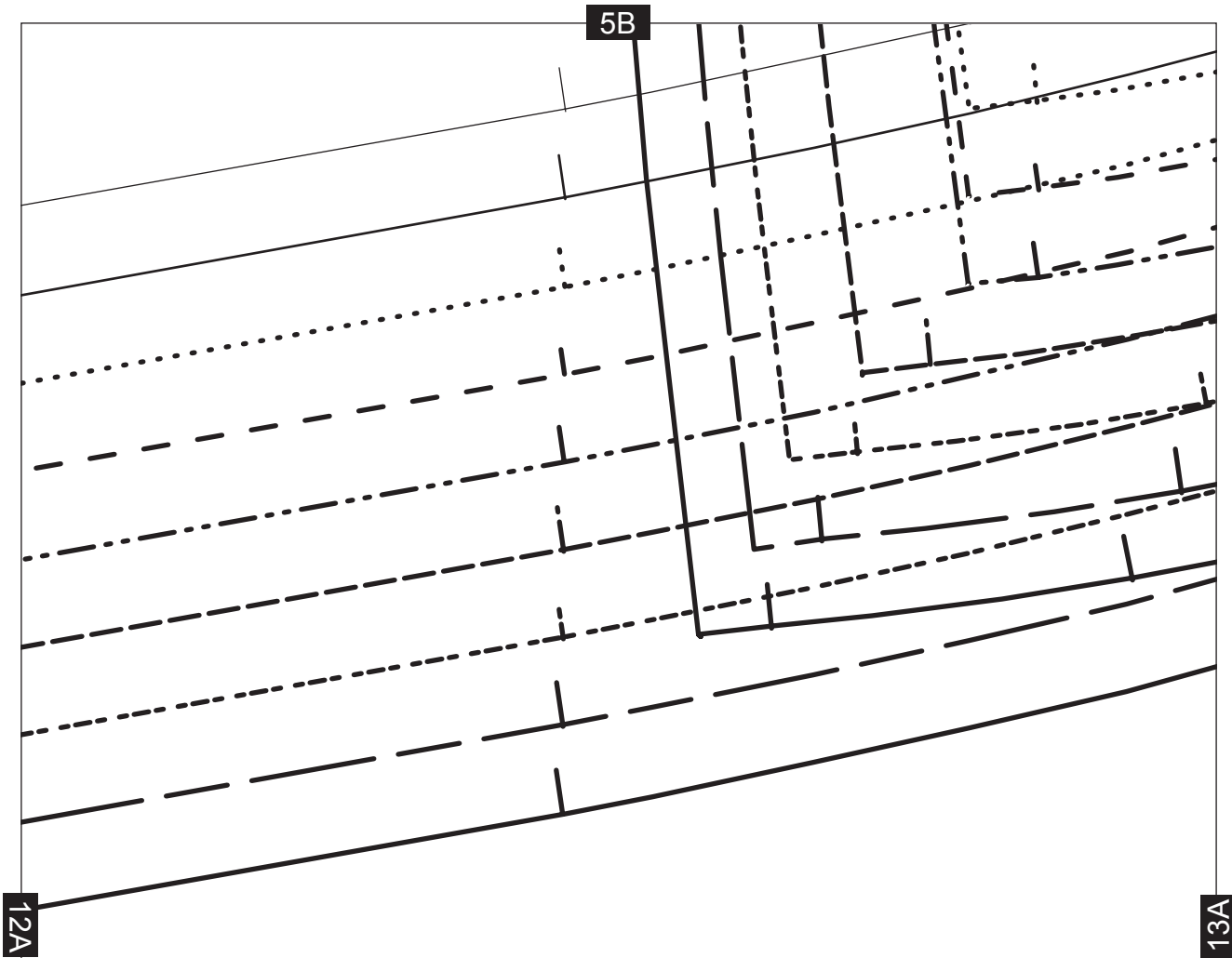


11A

12A

GRAINLINE

12B

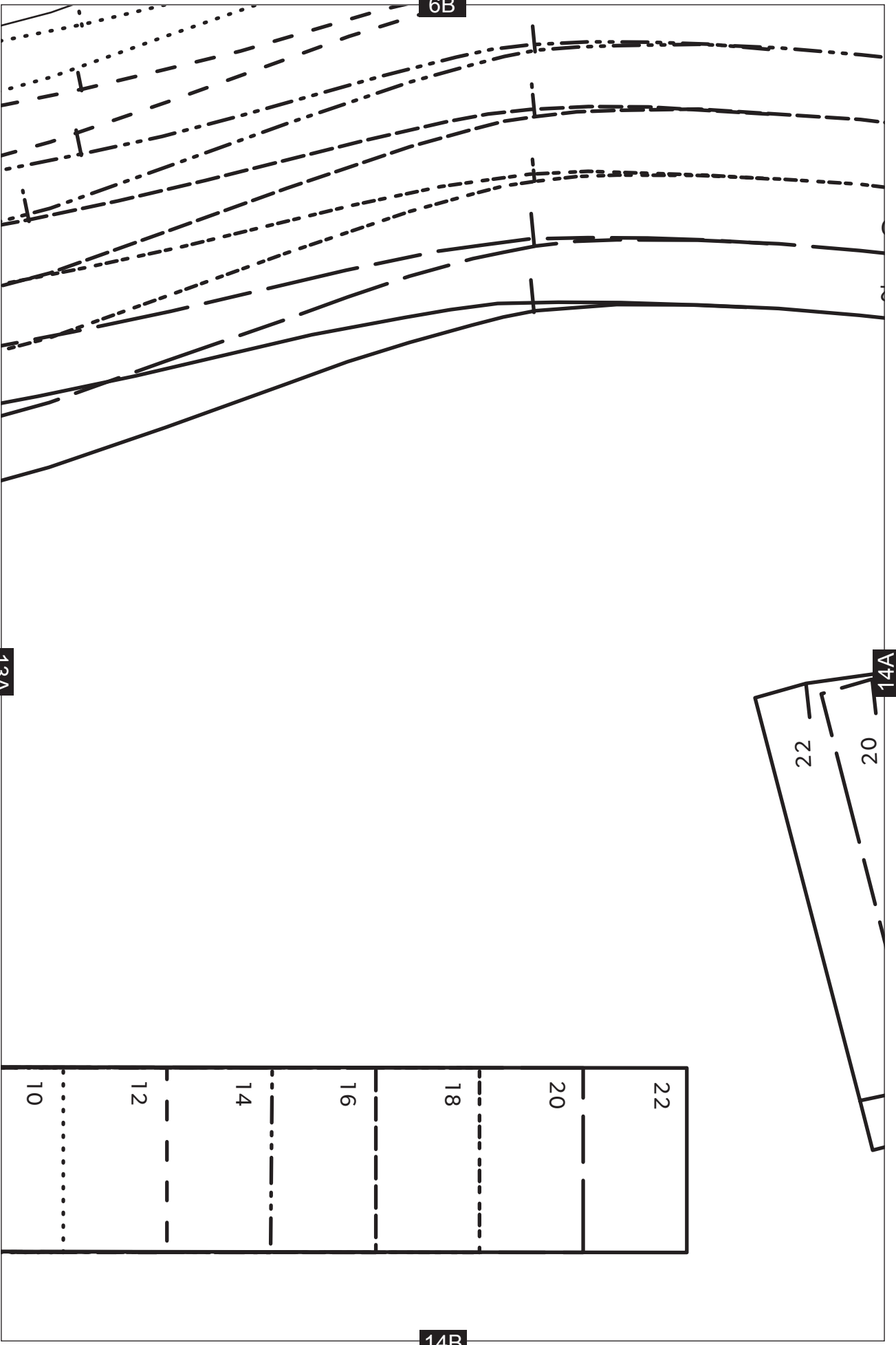


# THE TEA DRESS

Armhole binding Cut 2

9

8



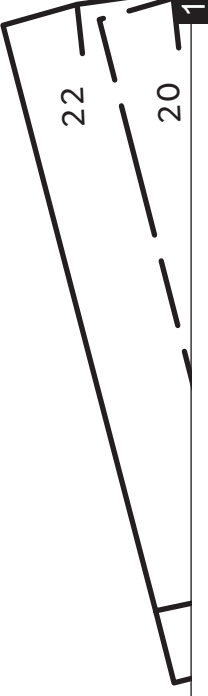
6B

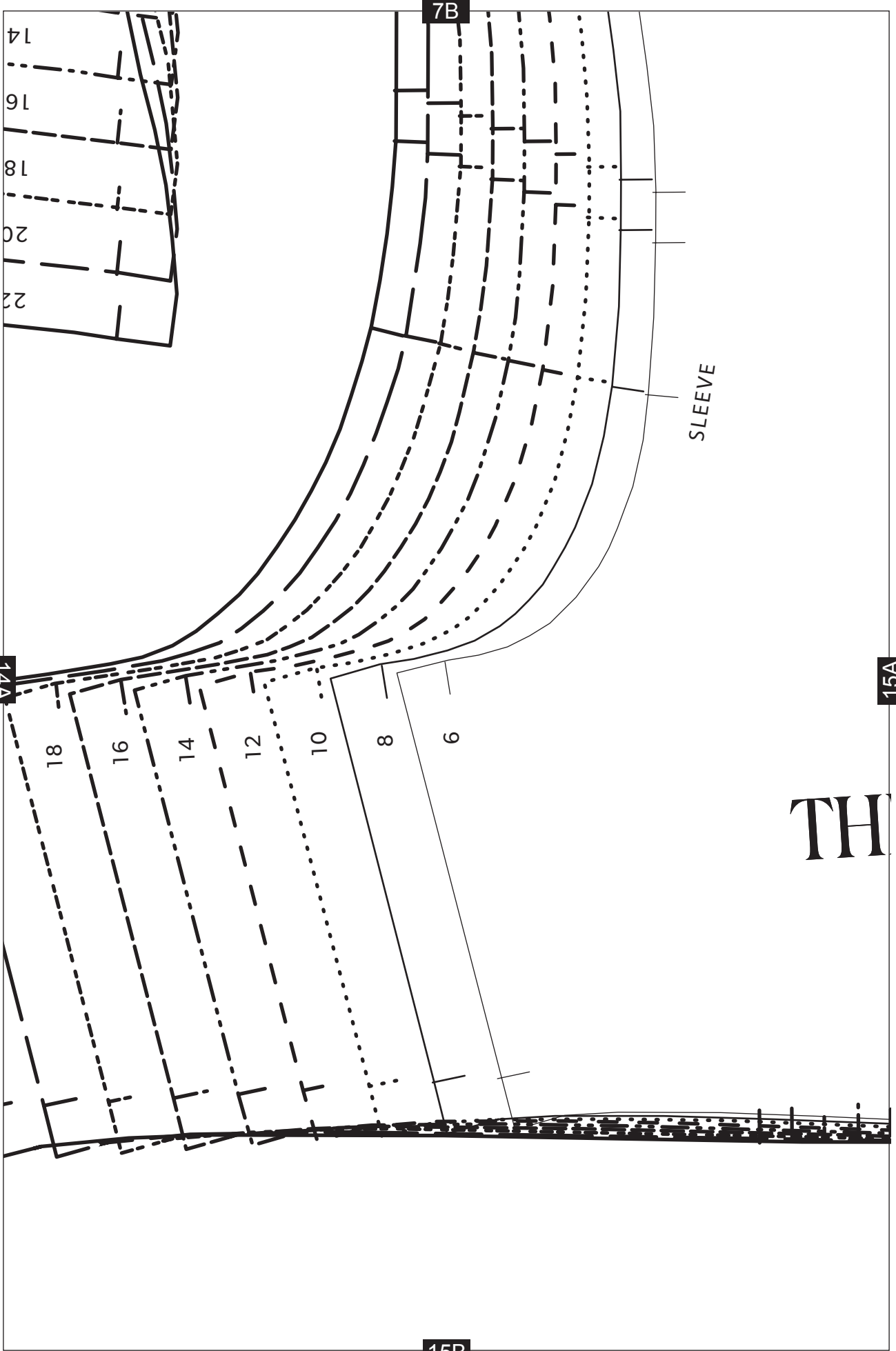
13A

14A

14B

22
20
18
16
14
12
10





8B

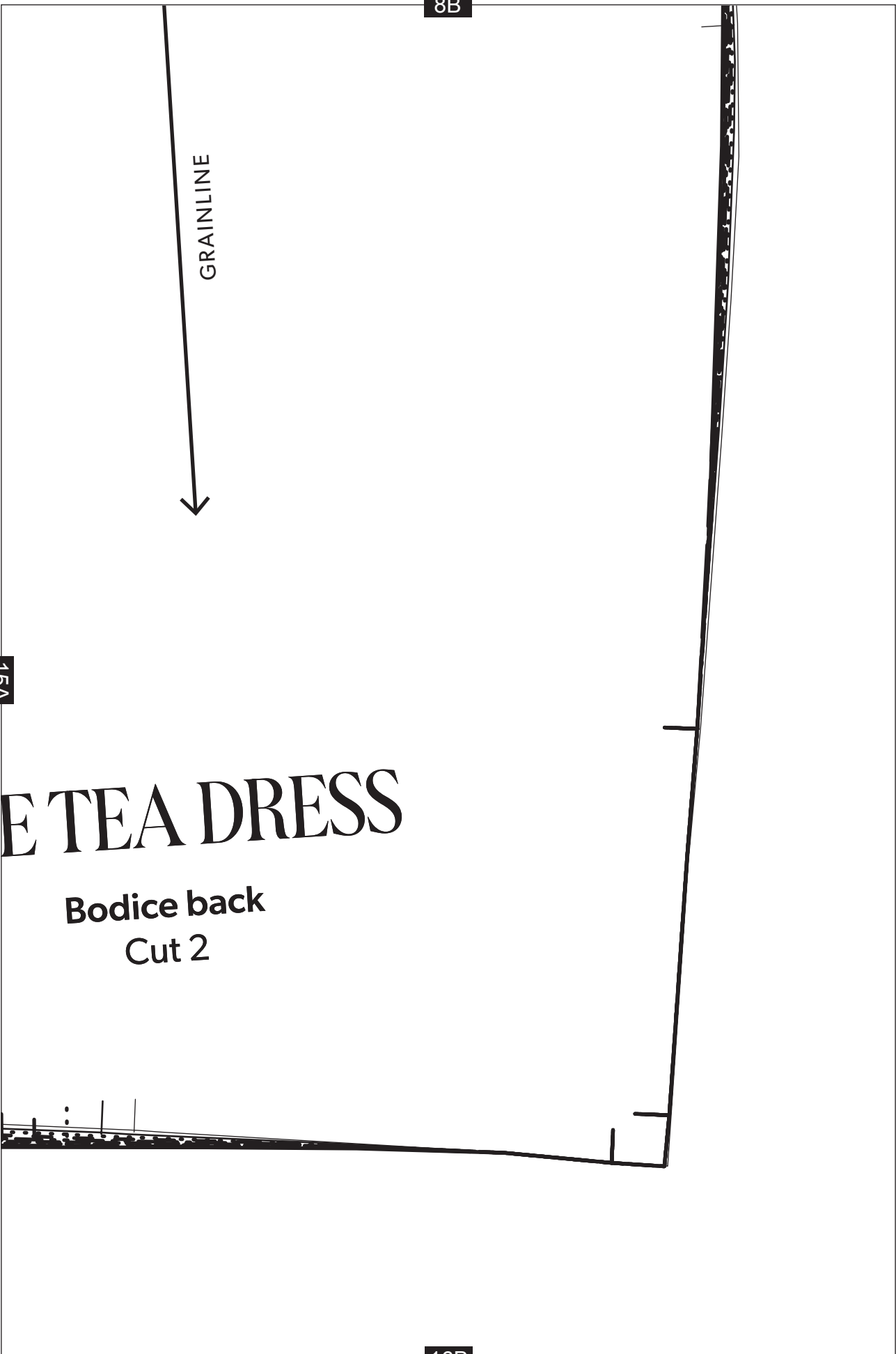
GRAINLINE



15A

# E TEA DRESS

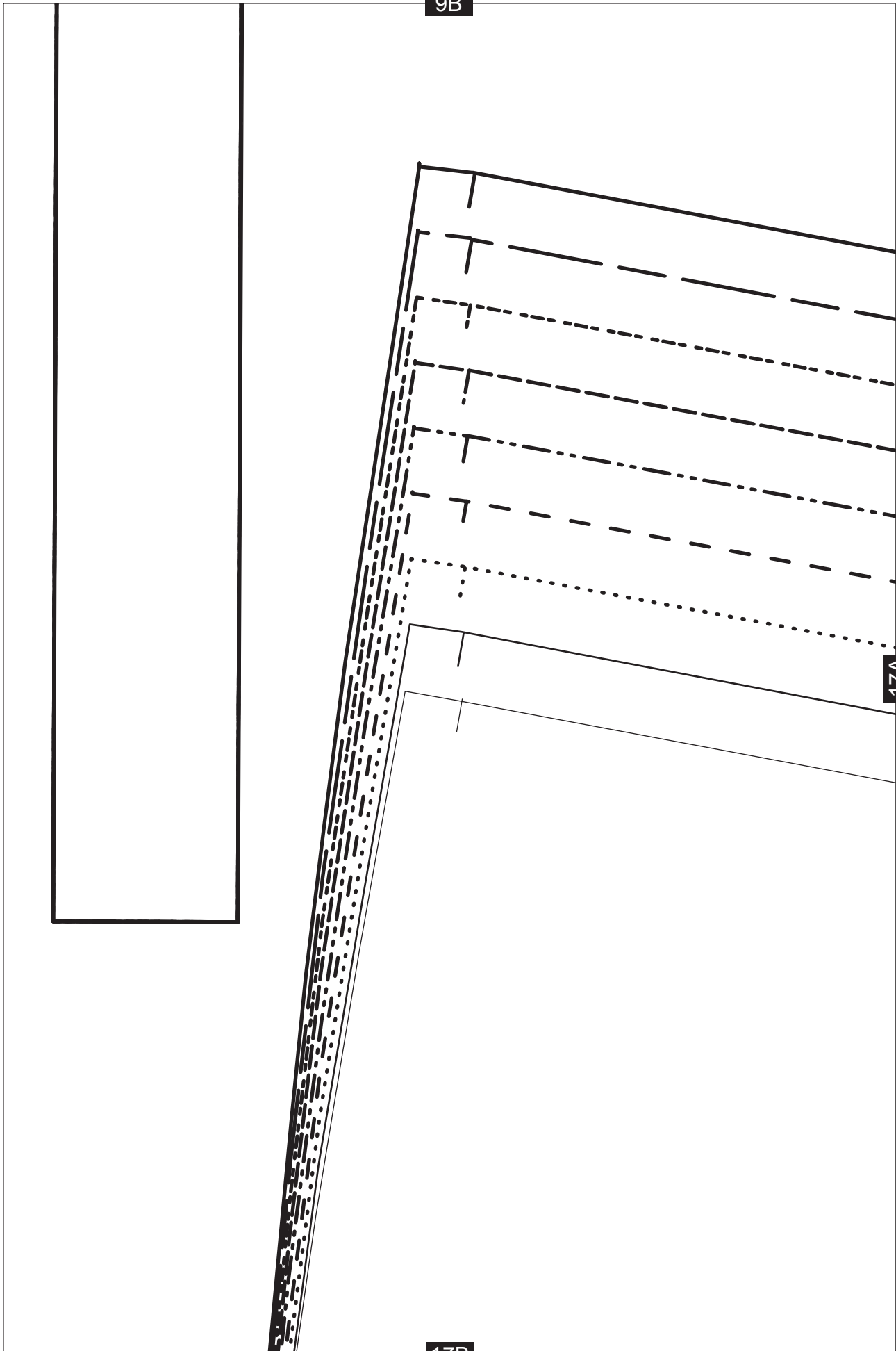
**Bodice back**  
**Cut 2**



16B



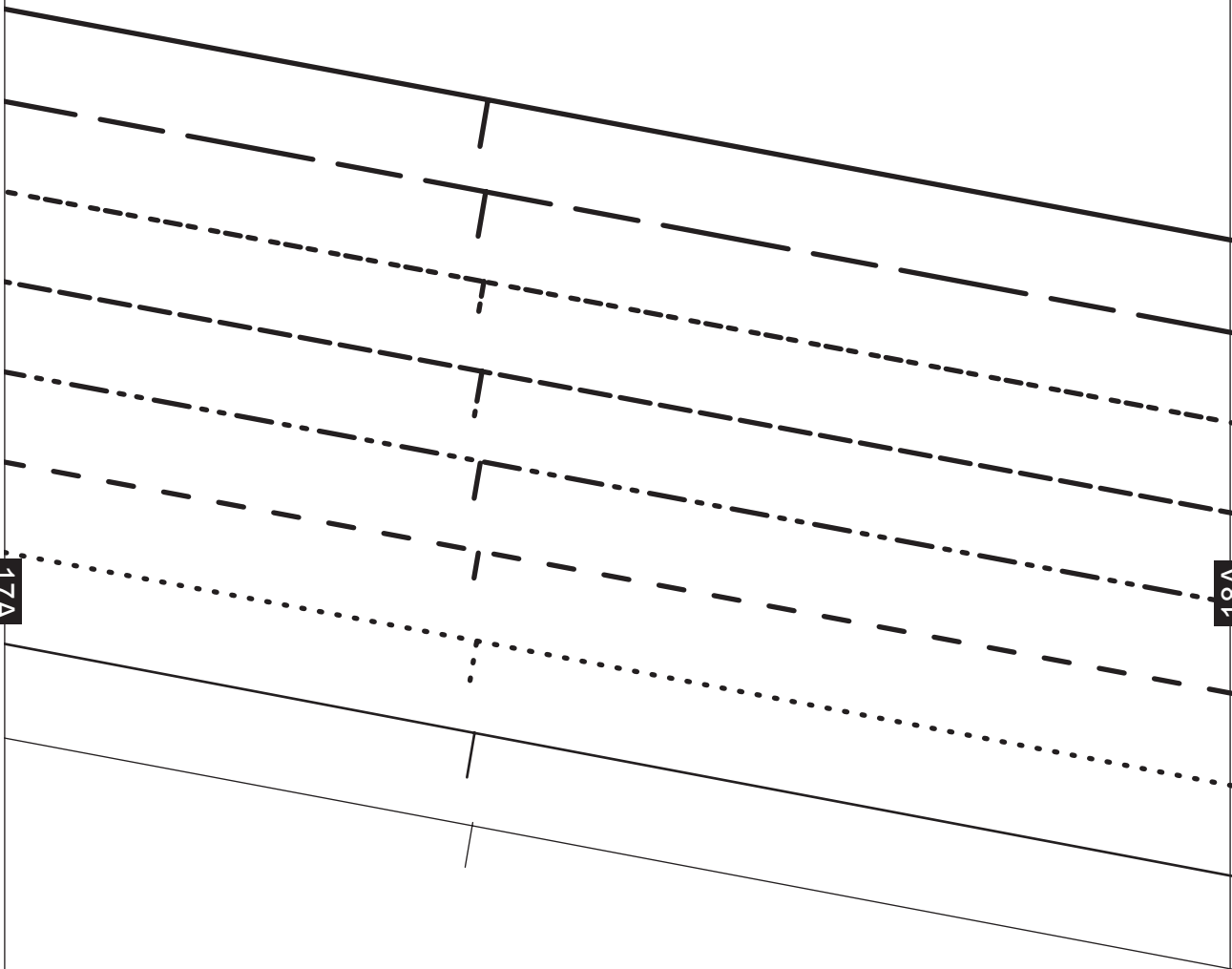
9B



17A

17B

10B

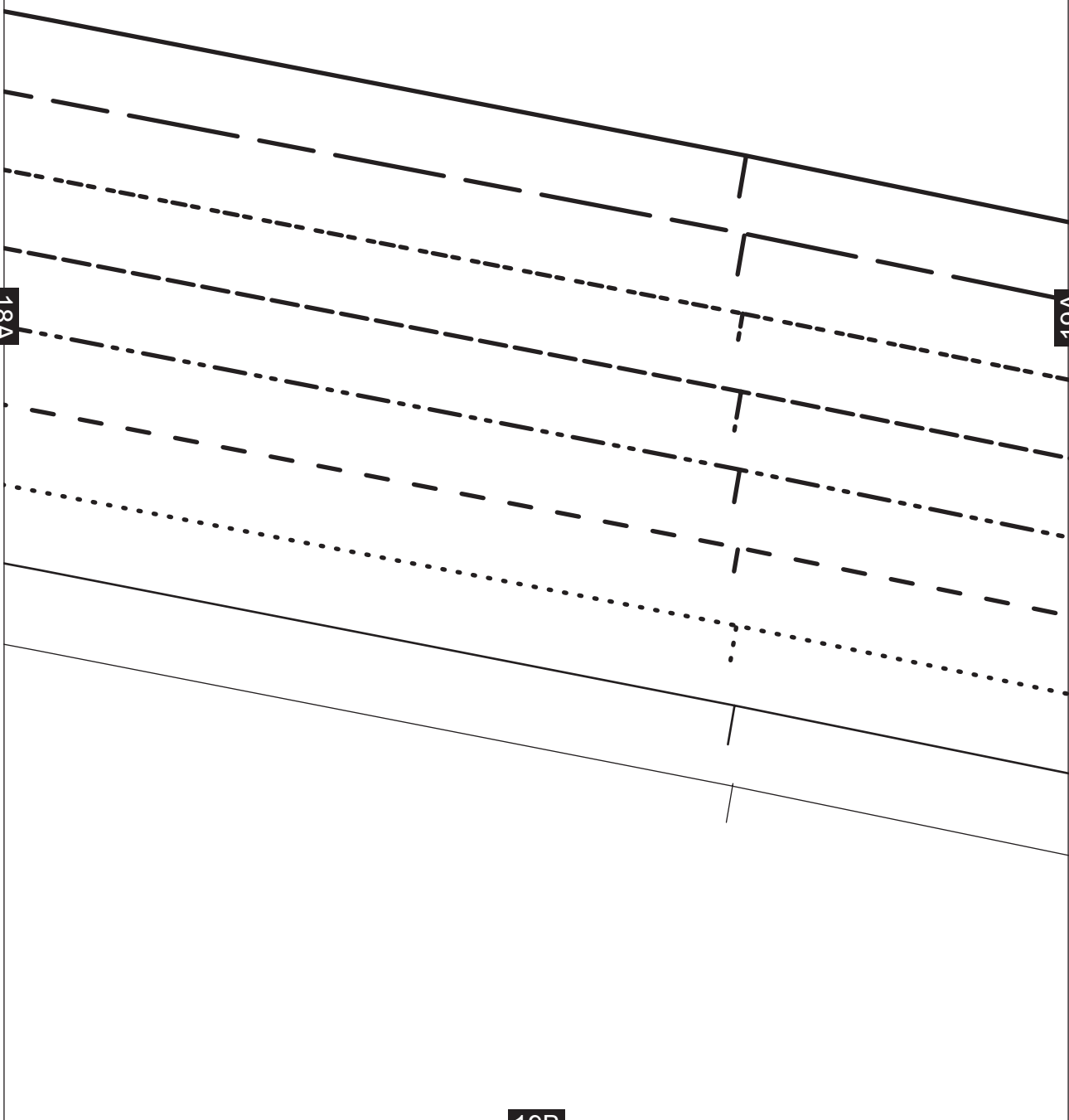


17A

18A

18B

11B





13B

FRONT

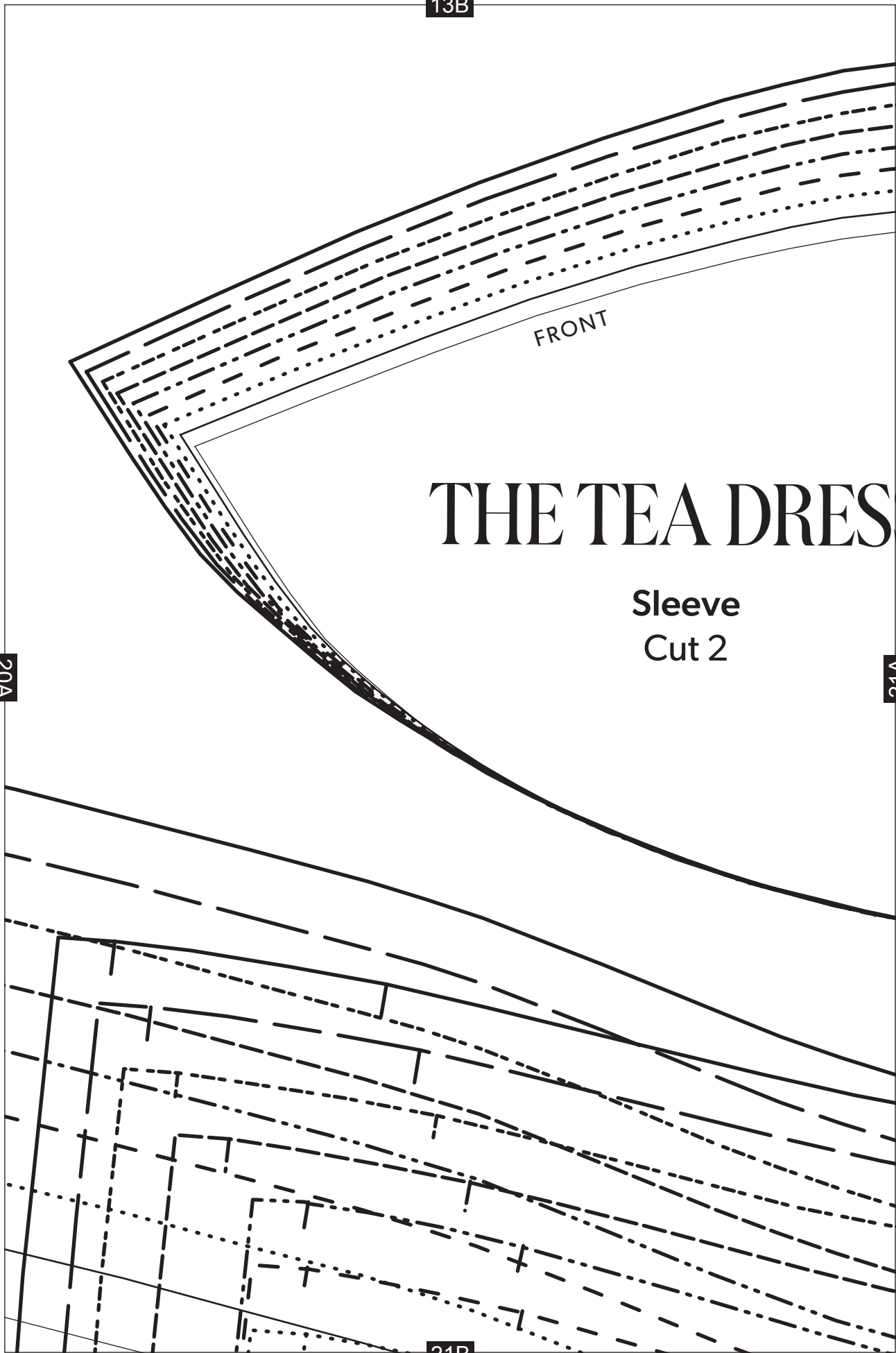
# THE TEA DRESS

Sleeve  
Cut 2

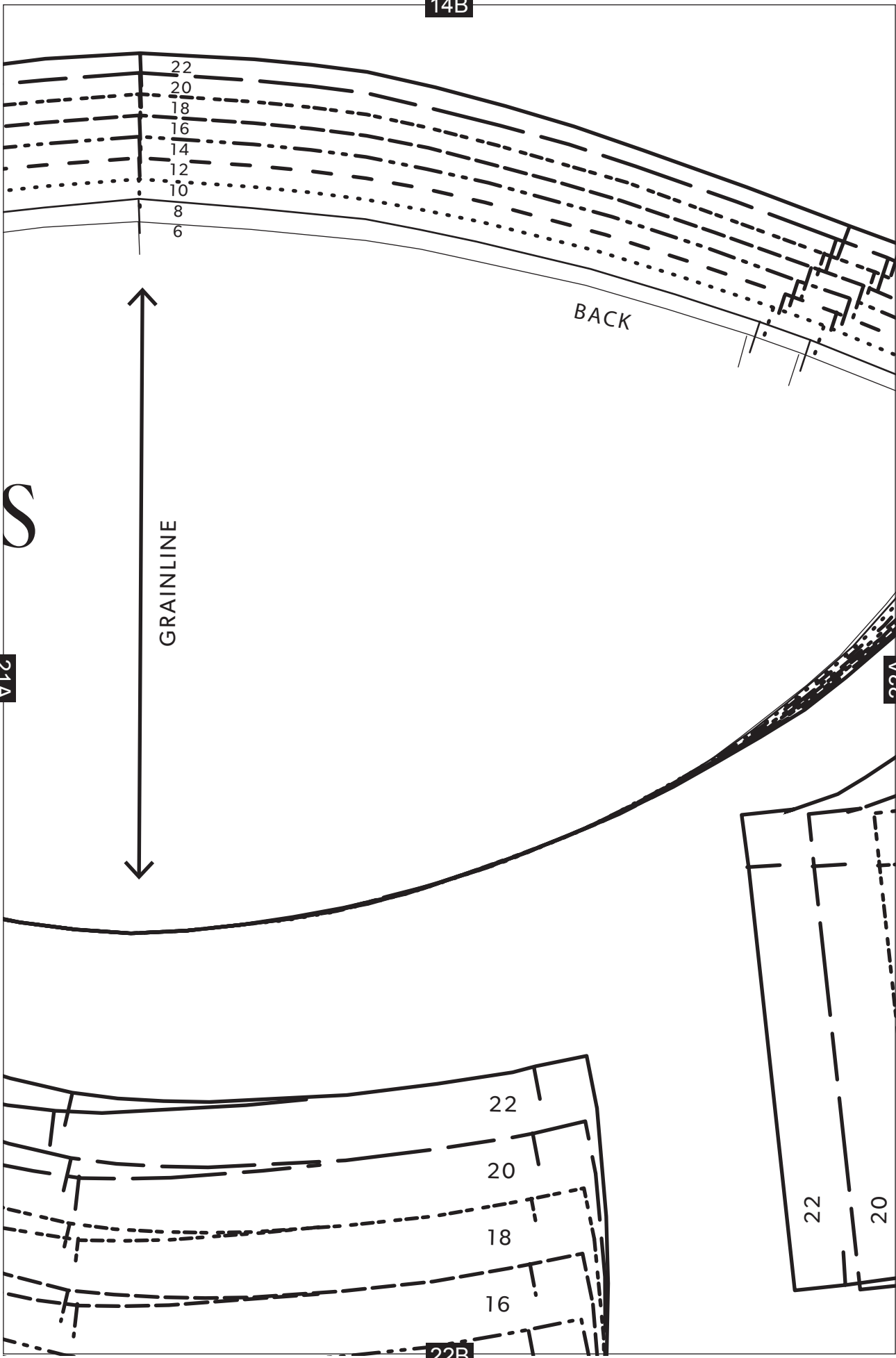
20A

21A

21B



14B



S

GRAINLINE

BACK

21A

22A

22

20

18

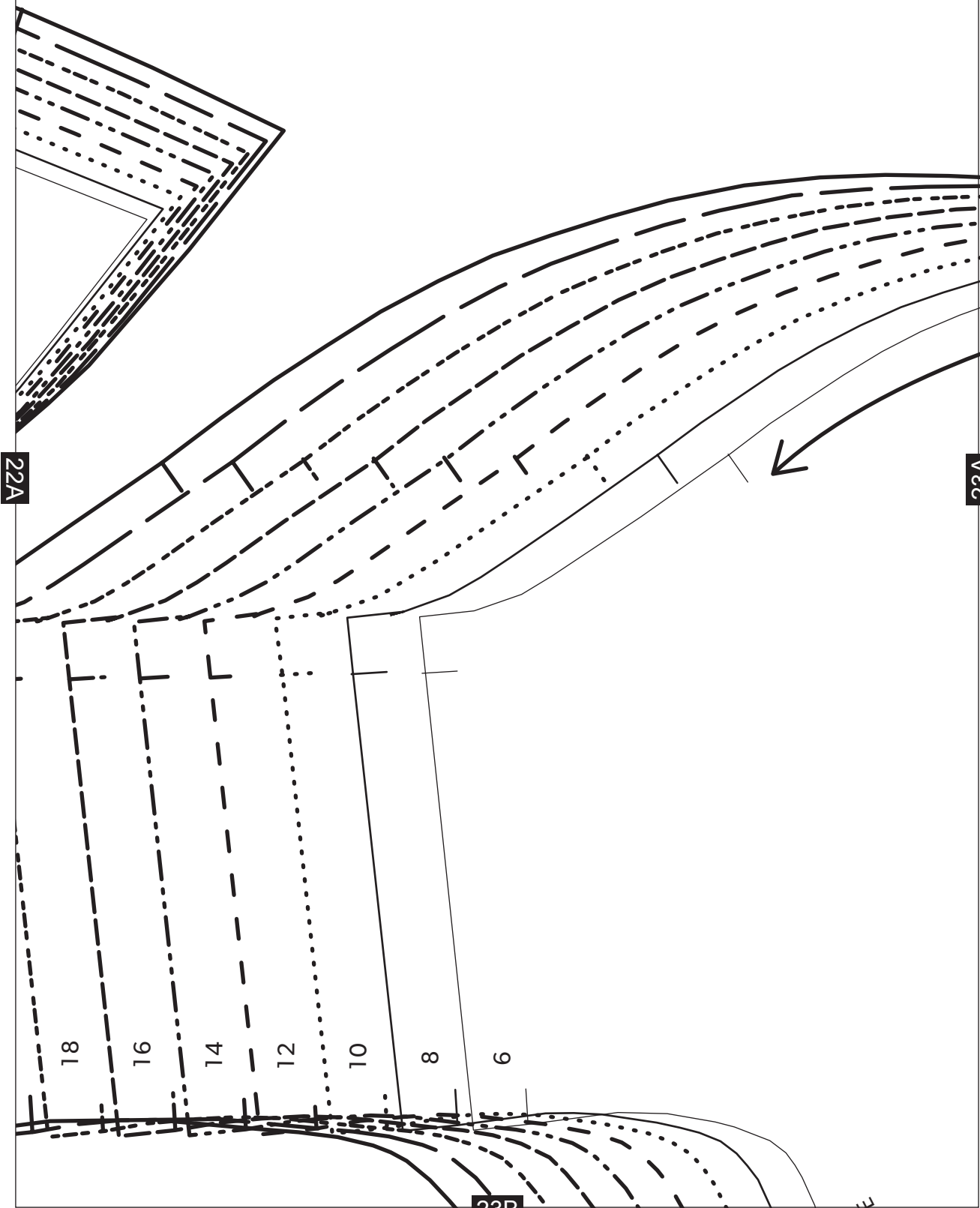
16

22B

22

20

15B



22A

23A

18

16

14

12

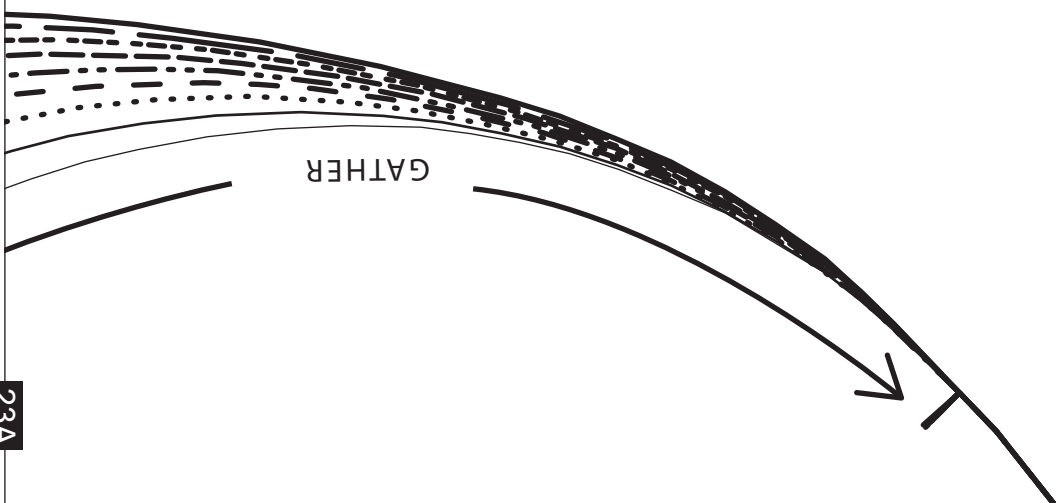
10

8

6

23B

16B



23A

GRAINLINE

PLACE

24B



17B

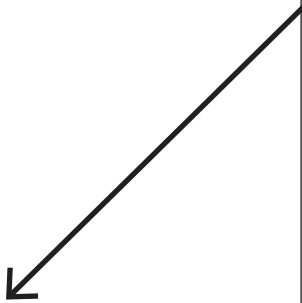


25A

18B

25A

26A

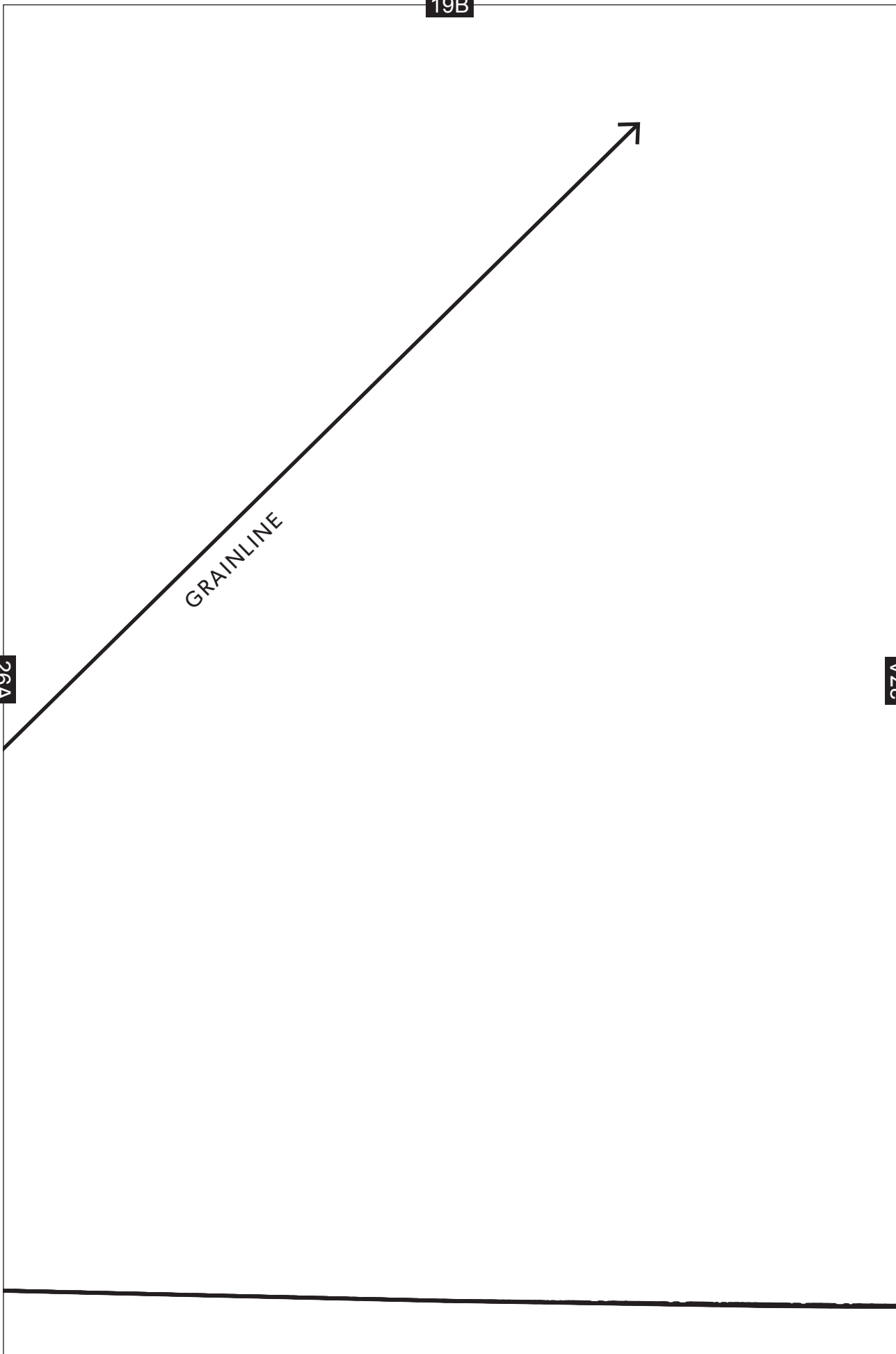


19B

26A

27A

GRAINLINE



20B

27A

28A

END

⋮  
|  
|

# THE TEA DRESS

Skirt back

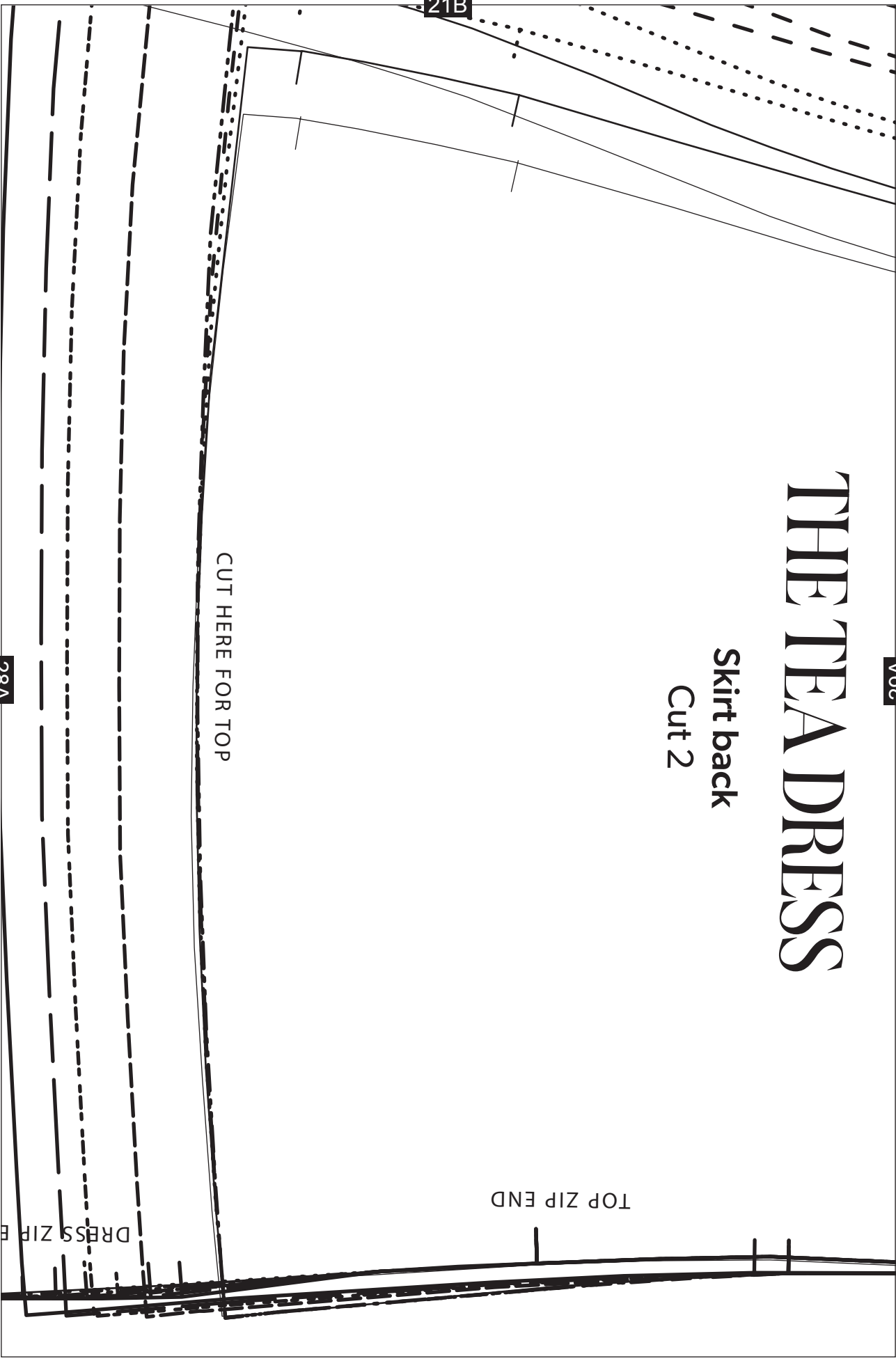
Cut 2

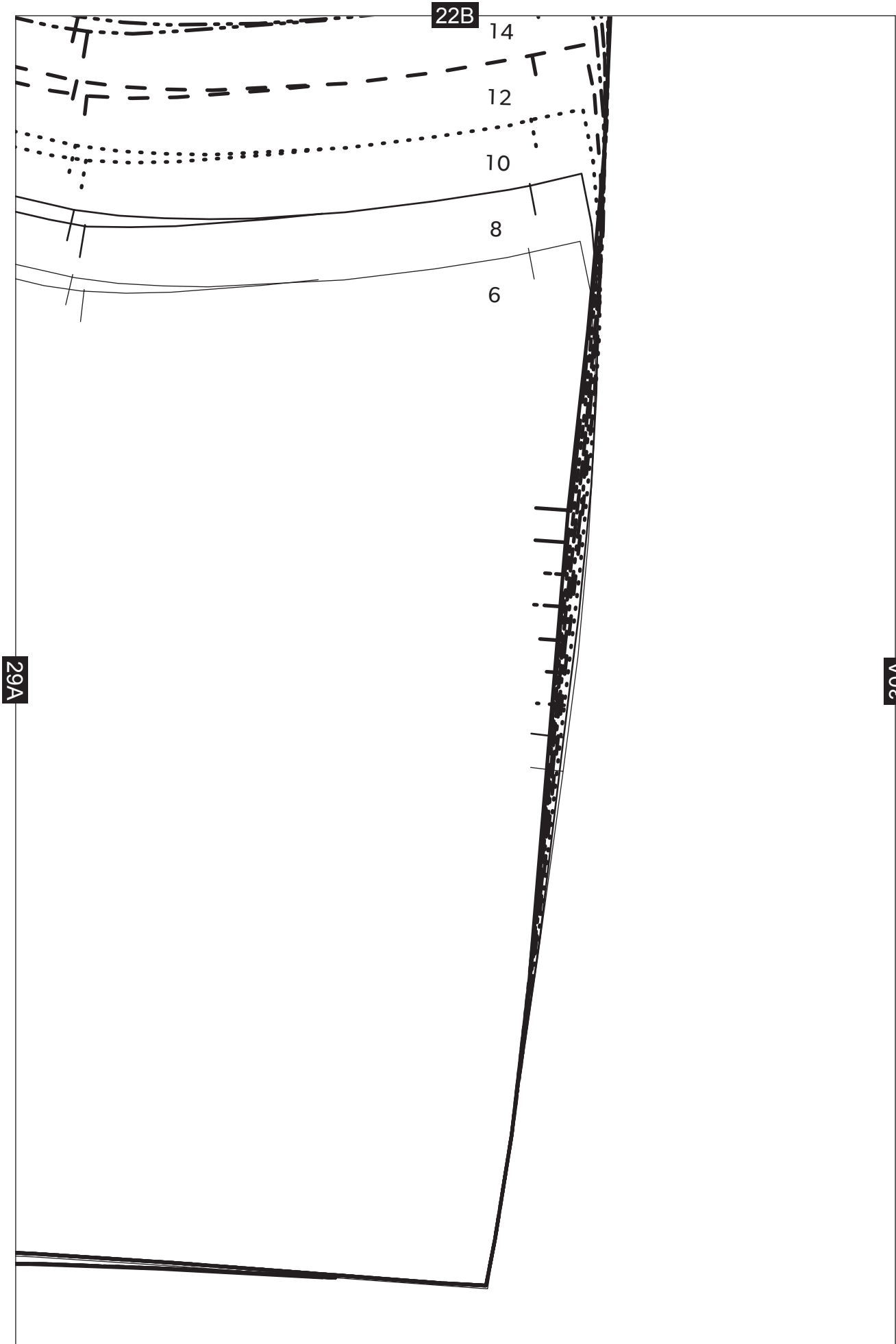
21B

CUT HERE FOR TOP

TOP ZIP END

DRESS ZIP END

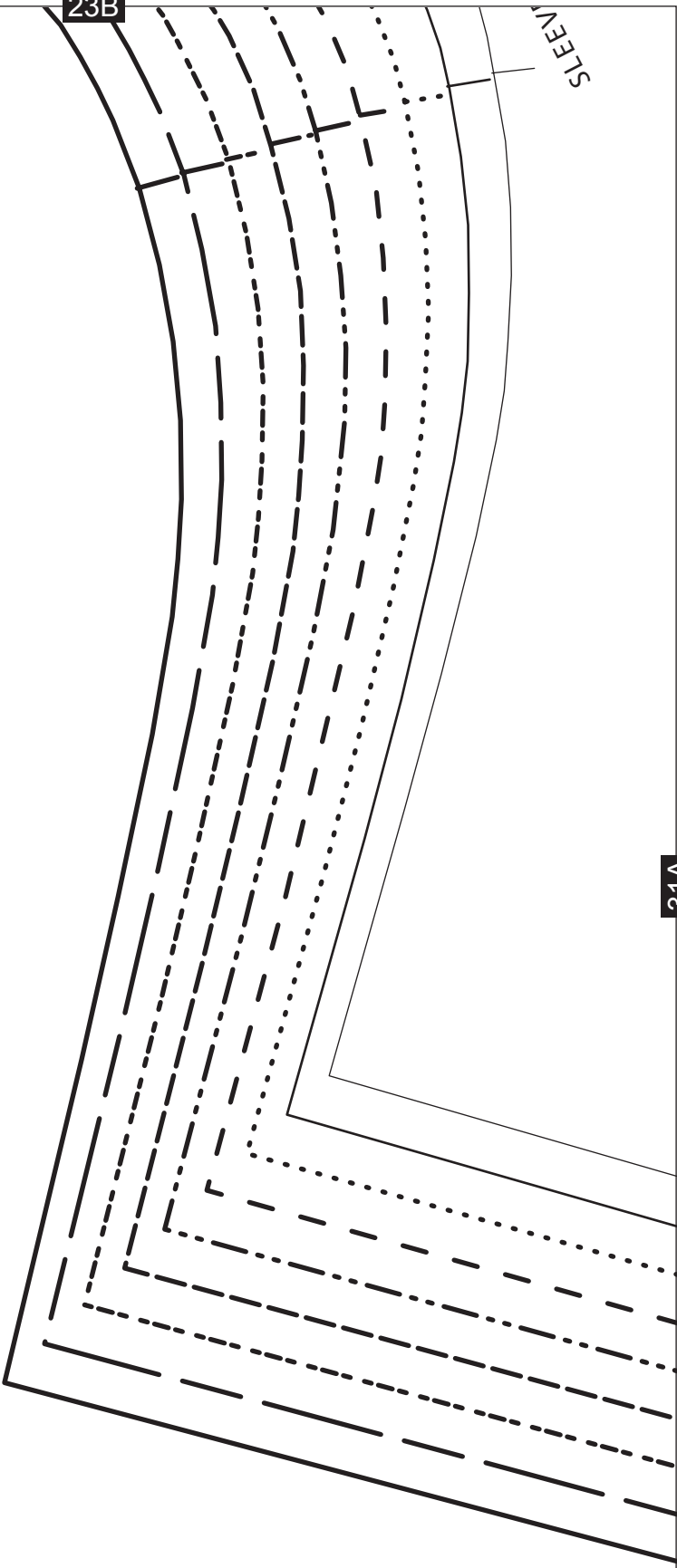




30A

23B

SLEEVES



31A

24B

ON FOLD

Bodice front  
Cut 1 on fold

# THE TEA DRESS

31A

